

# *Exceptional Experience*



maytronics | commercial pool cleaners



## **Enjoy the Dolphin Advantage**

Only Dolphin robotic pool cleaners by Maytronics deliver a complete, exceptional pool experience. Bringing together 30 years of expertise in automated pool cleaning, every Dolphin robot combines advanced technologies with proven reliability to ensure maximum satisfaction, every time.

When you purchase a Dolphin, you get much more than a standard robotic pool cleaner, including:

### **Advanced cleaning technologies**

- Intelligent, self-adjusting software ensures optimal coverage for any size or shape pool (including beach entry pools)
- Effective surface scrubbing system
- Powerful dirt and debris collection
- Precise navigation and programming options for total operation control

### **Designed for reliable, long-lasting performance**

- Manufacturer backed warranty on all parts
- Fully automated operation
- Obstacle escape mechanism
- Motor protection system
- Designed for demanding use

### **Cost effective and easy service**

- Built-in self-diagnostics
- High reliability reduces service and maintenance needs



# WAVE Family Application Guide

	PREMIUM AQUATIC		POWERHOUSE COMMERCIAL			SPECIALTY APPLICATION	
	Wave 300 XL	Wave 200 XL	Pro Expert 2X2	WAVE 100	WAVE 75	LIBerty Pro	W 20
<b>Ideal for pools</b>	50 - 60 m	25-50m	25 - 50 m	15 - 25 m	10 - 20 m	Irregular pools	Shallow pools to 20cm depths
<b>Cycle time</b>	1 to 8 hrs	1 to 8 hrs	4 / 6 / 8 hrs	4 / 6 / 8 hrs	2 / 3 / 4 hrs	1 / 1.25 / 1.5 hrs	1 / 3 hrs
<b>Surfaces Cleaned</b>	Floor	Floor	Floor, walls and waterline	Floor, walls and waterline	Floor, walls and waterline	Floor, walls and waterline	Floor
<b>Water Depth</b>	0.4 - 7m	0.4 - 7m	0.4 - 5m	0.4 - 5m	0.4 - 5m	0.4 - 5m	0.2 - 5m
<b>Cable Length</b>	43m Upgrade option to 50m	43m	40m	30m	24m	No cable	18m
<b>Cable Swivel</b>	Software Swivel	Software Swivel	Yes	Yes	Yes	No cable	Yes
<b>Filtration</b>	3 filtration options for all types of dirt and debris	Spiral 2 layer filter system	Fine and ultra fine porosity filter	Fine and ultra fine porosity filter	Fine and ultra fine porosity filter	Fine and ultra fine filtration cartridges	Fine porosity filter
<b>Brushes</b>	Dual-active brushes and 4 side brushes	Dual-active brushes and 4 side brushes	2 drive brushes	2 drive brushes	2 drive brushes	2 drive brushes	2 drive brushes
<b>Man-Machine Interface (MMI)</b>	Control panel for optimal programming and technical support	Control panel for optimal programming and technical support	Control and programming via power supply	-	-	-	-
<b>Auto Direct Navigation</b>	Gyro & compass navigation with scanning modes	Gyro & compass navigation with scanning modes	Gyro navigation	Gyro navigation	Cleverclean™ coverage	Gyro navigation	Cleverclean™ coverage and gyro
<b>Remote Control</b>	Yes	Yes	Yes	Yes	Yes	Yes	Yes
<b>Caddy</b>	Yes	Yes	Yes	Yes	Yes	Yes	Yes
<b>Warranty</b>	24 months*	24 months*	24 months	24 months	24 months	24 months	24 months

\* only through authorised Wave Master Dealers

## Wave 300 XL

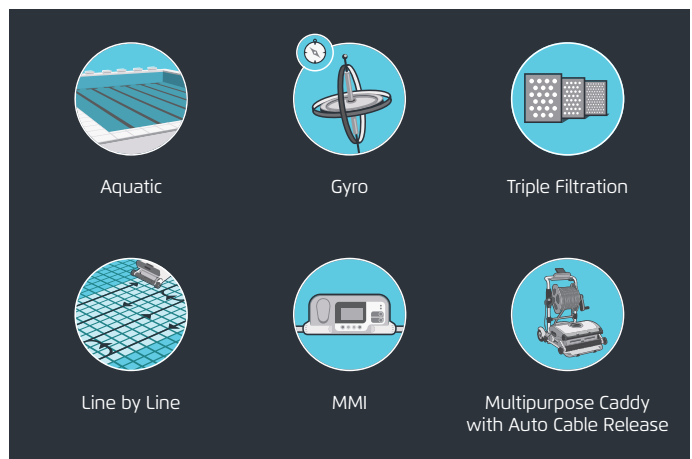
The Dolphin Wave 300 XL is a top-of-the-line robotic cleaner for commercial pools of any shape or type, up to 60 m long.

- Optimised water suction leaves a perfectly clean path
- Cycle time and cleaning modes allow for scanning programs to be set for up to 4 different pools.

### WAVE 300 XL Product Specifications

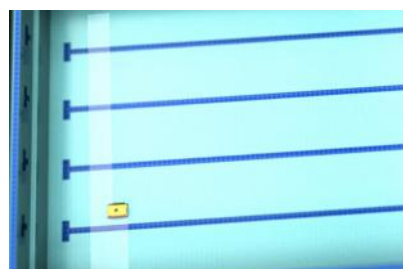
<b>Ideal for pools</b>	Up to 60 m in length
<b>Cycle time</b>	1-8 h
<b>Cable</b>	43 m / 50 m
<b>Weight</b>	26.5 kg
<b>Suction rate</b>	40 m <sup>3</sup> /h
<b>Linear speed</b>	15 m/min
<b>Filtration</b>	Three filtration options for all dirt and debris
<b>Brushes</b>	Dual-active brushes and 4 side brushes for intensive all-terrain cleaning
<b>MMI</b>	Interactive digital interface – selectable cleaning modes and on-line technical diagnostics
<b>Auto direct navigation system</b>	Gyro XL and compass system with scanning modes
<b>Warranty</b>	24 months or 3000 hours*

\* only through authorised Wave Master Dealers



### Outstanding Cleaning Results

- **Optimised water suction** and **dual active brushing** leaves commercial pool water crystal clear.
- **Crystal clear filtration including** fine, ultra-fine and wide mesh filter options.



### Advanced Navigation

- **Advanced navigation system** and **multiple scanning modes** ensures complete pool coverage.
- **Line by line cleaning** - ideal when cleaning time is limited.
- **Criss-cross mode** - optimal for irregular shaped pools or pools with obstacles.



### Simple to Use

- **MMI (Man-Machine Interface)** is an interactive digital interface containing features like – filter full indicator, operation delay and modes of operation.
- Automatic operation of **“Drive to Pool”** and **“Drive Home”** allowing simple operation with minimal fuss.

## Wave 200 XL

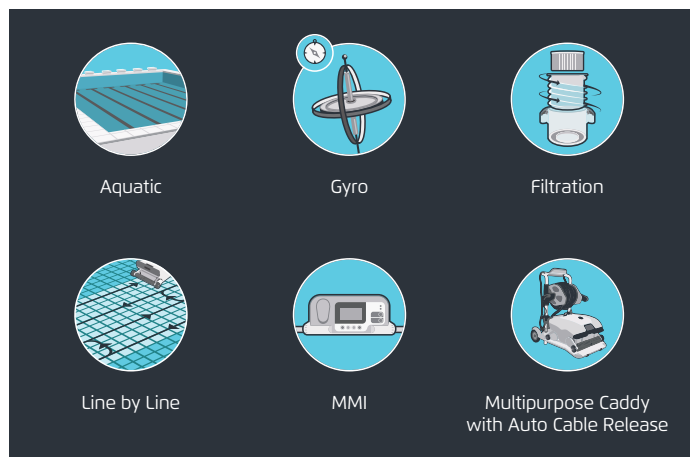
The Dolphin Wave 200 XL is a revolutionary robotic cleaner for mid-sized commercial pools. A single-robot solution for multiple pools in a facility, it delivers the best wall-to-wall cleaning in its class.

- Interactive MMI for easy operation, and intuitive programming and diagnosis
- Fast, efficient operation for uncompromising performance

### WAVE 200 XL Product Specifications

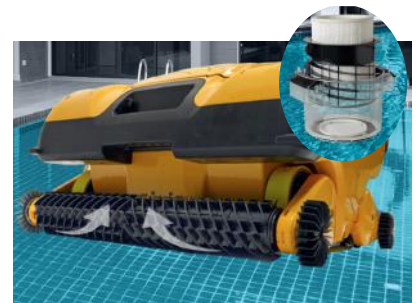
<b>Ideal for pools</b>	From 20 m - 50 m
<b>Cycle time</b>	1 - 8 h
<b>Cable</b>	43 m
<b>Weight</b>	24 kg
<b>Suction rate</b>	34 m <sup>3</sup> /h
<b>Linear speed</b>	12.5 m/min
<b>Filtration</b>	Spiral 2 layer system
<b>Brushes</b>	Dual active brushes and 4 side brushes for intensive all-terrain cleaning. Brushes rotate 1.5 faster than the robot
<b>MMI</b>	Interactive digital interface – selectable cleaning modes and on-line technical diagnostics
<b>Auto direct navigation system</b>	Gyro XL and compass system with scanning modes
<b>Warranty</b>	24 months or 3000 hours*

\* only through authorised Wave Master Dealers



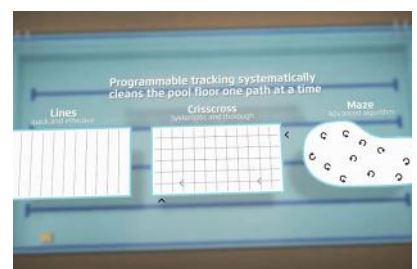
### Advanced Filtration and Brushing System

- **Advanced spiral flow filtration** technology effectively collects fine, ultra-fine and rough debris leaving water crystal clear.
- **Enhanced active spiral brushing** - dual direction brushes effectively sweeps debris into the spiral flow filter for removal from pool.



### Advanced Navigation

- **Advanced navigation system** and **multiple scanning modes** ensures complete pool coverage.
- **Line by line cleaning** - ideal when cleaning time is limited.
- **Criss-cross mode** - optimal for irregular shaped pools or pools with obstacles.



### Cost Effective, Long-lasting Value

- **Multi-pool cleaning** - cycle time and cleaning modes allow for scanning programs to be set for up to 4 different pools.
- **Multi-purpose caddy** with auto-cable release – for easy transfer of the robot and prevents cable tangles.



## PRO EXPERT 2X2

The Dolphin PRO Expert 2X2 is a powerhouse all-round solution for larger aquatic pools 25 - 50 m in length.

- Heavy-duty cleaning performance with robust reliability and easy maintenance for long-term, effective use
- Accurate, full-coverage scanning and high-capacity filtration ensure clean and hygienic pool water



## wave100

The Dolphin Wave 100 is a proven, professional robotic pool cleaner that is suited to mid sized pools 15 - 25 m.

- Unique gyroscopic system delivers accurate, effective scanning of the entire pool
- Fully automated operation and highly effective brushing and filtering deliver heavy-duty cleaning performance

## wave75

The Dolphin Wave 75 is suited to smaller sized pools 10 - 20 m and designed for powerhouse all-round applications.

- Heavy-duty cleaning performance with robust reliability and easy maintenance for long-term, effective use
- Accurate, full-coverage scanning and high-capacity filtration ensure clean and hygienic pool water



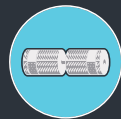
Remote Control



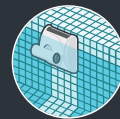
Swivel



CleverClean™



Dual Motor



Walls & water line



Caddy

## WAVE Powerhouse Aquatic Product Specifications

	Pro Expert 2X2	WAVE 100	WAVE 75
<b>Ideal for pools</b>	Up to 50 m in length	Up to 25 m in length	Up to 20 m in length
<b>Cycle time</b>	4, 6, 8 h	4, 6, 8 h	2 / 3 / 4 h
<b>Cable</b>	40 m	30 m	24 m with swivel
<b>Weight</b>	19 kg	12 kg	10 kg
<b>Suction rate</b>	34 m <sup>3</sup> /h	17 m <sup>3</sup> /h	17 m <sup>3</sup> /h
<b>Power supply - digital switch-mode</b>	Output <30 VDC; IP 54; full filter bag indicator	Output <30 VDC; IP 54; full filter bag indicator	Output 24 VDC; IP54; full filter bag indicator
<b>Filtration</b>	Dual filtration options for all types of dirt and debris	Three filtration options for all types of dirt and debris	Dual filtration options for all types of dirt and debris
<b>Brushes</b>	Dual drive brushes	Dual drive brushes	Dual drive brushes
<b>Caddy</b>	Mobile for easy handling and storage	Mobile for easy handling and storage	Mobile for easy handling and storage
<b>Warranty</b>	24 months	24 months	24 months

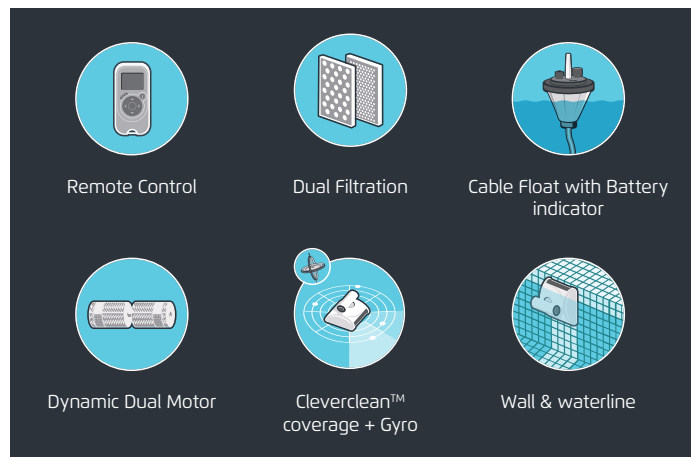
## LIBerty PRO

A unique battery-powered cordless robotic pool cleaner for pools that are irregularly shaped or have pool obstacles such as islands, pillars and bridges.

- Gyro improves navigation for better cleaning
- Cleans pool floor, walls and waterline

### LIBerty Pro Product Specifications

<b>Ideal for pools</b>	Up to 15 m in length
<b>Cycle time</b>	1 / 1.25 / 1.5 h
<b>Cable</b>	2.5m connected to floatiing battery
<b>Weight</b>	13.2 kg
<b>Suction rate</b>	17 m <sup>3</sup> /h
<b>Charger</b>	Digital switch mode charger
<b>Recharge time</b>	2-4 hrs
<b>Filtration</b>	Dual filtration options for all types of dirt and debris
<b>Caddy</b>	Mobile for easy handling and storage
<b>Warranty</b>	24 months including battery



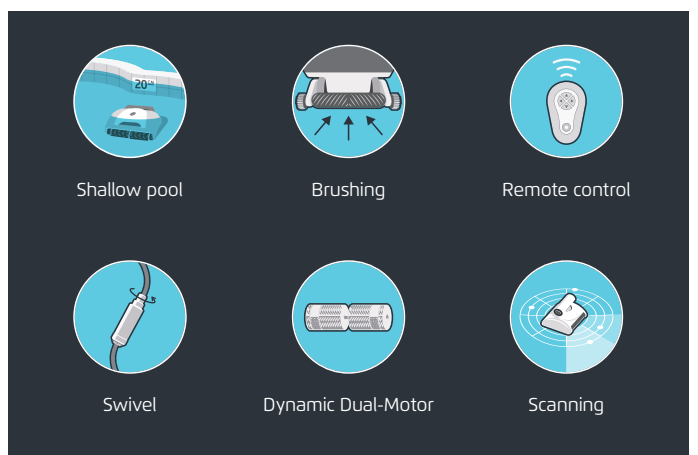
## W 20

The Dolphin W 20 is the only robotic pool cleaner that efficiently cleans water just 20 cm (8 in) deep, making it perfect for toddler paddling pools and water features.

- Packs advanced robotic cleaning technologies into a compact size
- Saves manpower, minimizes pool downtime, and achieves outstandingly clean pools

### W 20 Product Specifications

<b>Ideal for pools</b>	Up to 15 m in length
<b>Water depth</b>	0.2 – 5 m
<b>Cycle time</b>	1 or 3 hours
<b>Cable</b>	18 m with a swivel
<b>Weight</b>	10 kg
<b>Filtration</b>	Ultra fine filter
<b>Brushes</b>	Dual drive brushes
<b>Remote control</b>	Selectable regular/faster cycle time and manual navigation
<b>Caddy</b>	Mobile for easy handling and storage
<b>Warranty</b>	24 months



## About Maytronics

Maytronics provides a complete solution for swimming pool care. Our wide range of products for automated pool cleaning, environmentally-friendly water treatment and pool safety deliver an exceptional pool experience to residential and commercial swimming pool owners and operators around the world.

Founded in 1983, Maytronics is the pioneer in automated electronic pool cleaning technology for private and commercial pools, developing the world-renowned Dolphin robot cleaners. Over the years, Maytronics have become the acknowledged market leader, setting worldwide standards for unmatched technological innovation coupled with highly aesthetic designs. Our state-of-the-art products and technologies consistently set new standards in pool care. All our systems are extensively tested in realworld conditions and conform to ISO 9001:2008 and CE Directives/UL Standards. Maytronics maintains an extensive global distribution network and easy-access service centres to provide reliable and efficient sales, service and technical support.

We believe in building strong, long-term relationships with our agents, some of whom have represented the company for more than 30 years.

**maytronics**  
Exceptional  
Experience

[www.dolphinpro.com.au](http://www.dolphinpro.com.au)

